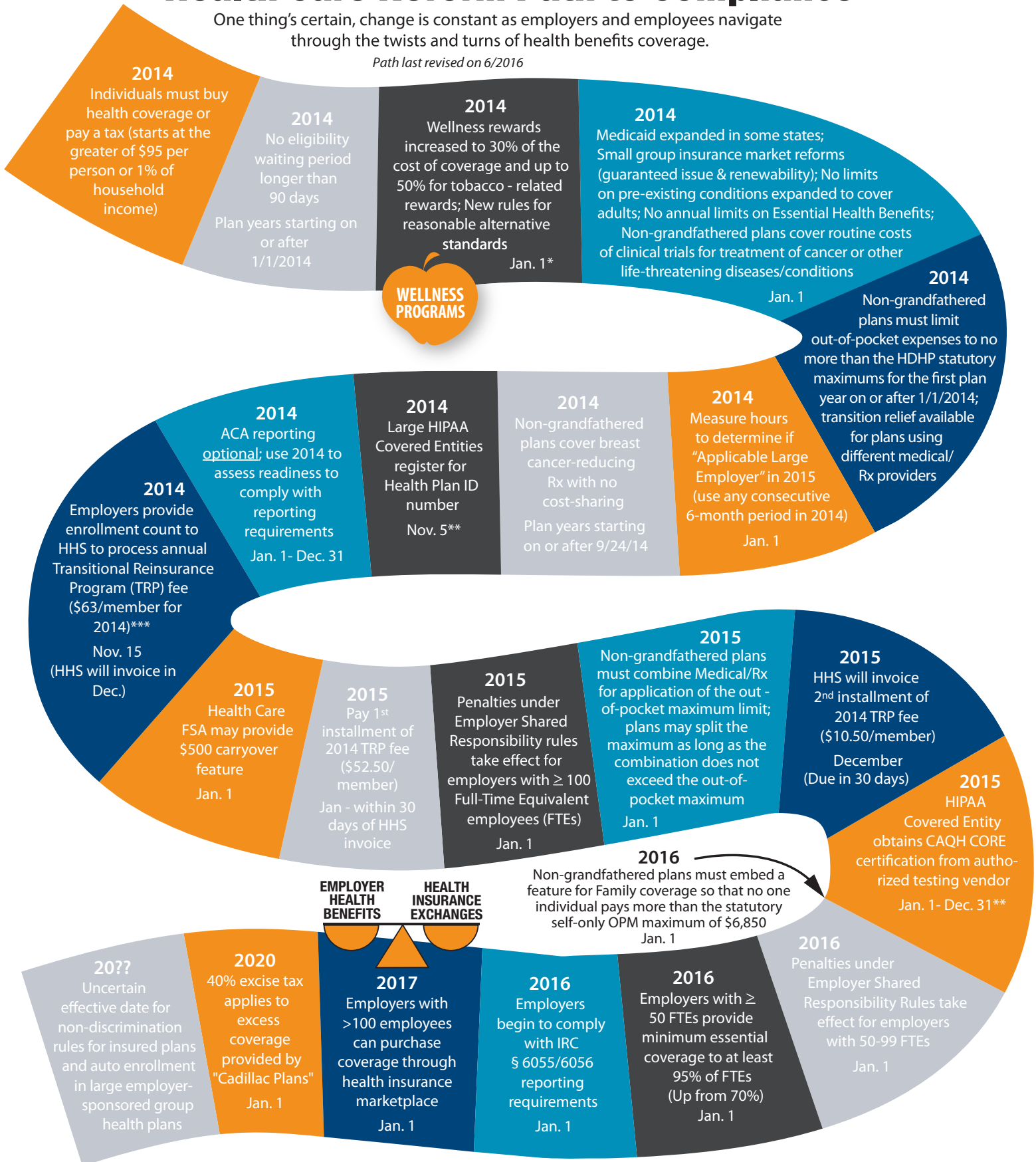


Health Care Reform Path to Compliance

One thing's certain, change is constant as employers and employees navigate through the twists and turns of health benefits coverage.

Path last revised on 6/2016



* April 2015 EEOC regulations re: ADA and wellness plans
 ** Effective Oct. 31, 2014 enforcement delay
 *** \$44/member for 2015 and \$27/member for 2016

For assistance on your compliance journey contact Bruce Davis, principal, 419.327.4133, bdavis@findleydavies.com.

